



CX-R12K-NAS

PORTABLE NAS SERVER

Quick Installation Guide



Should you have any questions about the product,
please feel free to contact us.

Ciphertex Technical Support | Toll free +1 (877) 977-8878
9301 Jordan Ave. #106 Chatsworth, CA 91311
Telephone: +1 (818) 773-8989 Website: www.ciphertex.com

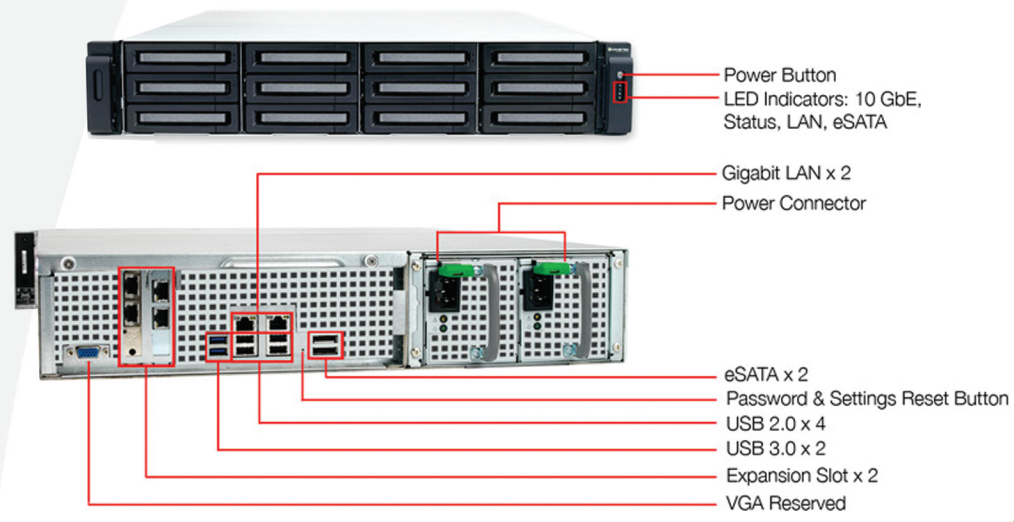
Maximum Security | Maximum Performance

PACKAGE CONTENTS



- a. CX-R12K-NAS
- b. Ethernet cables (4)
- c. Power cord (2)
- d. CD-ROM
- e. Screw pack
- f. Quick Start Installation Guide

HARDWARE ILLUSTRATION









FCC CE Compliance
 Designed/Assembled/Integrated/Tested
 In the USA using domestic and/or foreign components

INSTALL THE HARDWARE

- 1 Unpack the NAS and accessories. Locate the NAS Unit in an appropriate place at your facility.
- 2 Connect the network cable.
- 3 Connect the power cord and plug in the power cord to the socket.
- 4 Turn on the server. It will beep once. Please wait for 5 minutes until the server beeps a second time. The server has now started up.



SYSTEM CONFIGURATION

MAC OR LINUX USERS

- a. Connect the CX-R12K-NAS to the computer directly.
- b. Turn on the CX-R12K-NAS.
- c. Open a web browser and enter the IP address of the CX-R12K-NAS: `http://169.254.100.100:8080/`

Note: Make sure the IP address of your computer is configured to the same subnet. e.g. 169.254.100.1

- d. Follow the instructions to finish configuration.



WINDOWS USERS

NOTES

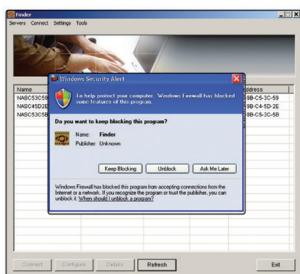
- a. Execute the product CD, a model selection menu is shown.



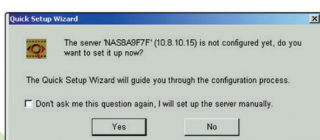
- b. Click "Install NAS Finder Software"



- c. Follow the instructions to install Ciphertex Locator. Ciphertex Locator will run automatically. If you are using Windows XP SP2, the screen below will be shown. Click "Unblock".

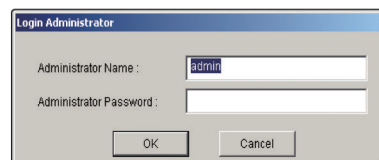


- d. Ciphertex Locator detects the CX-R12K-NAS on the network and prompts you to perform quick setup. Click "Yes" to continue.



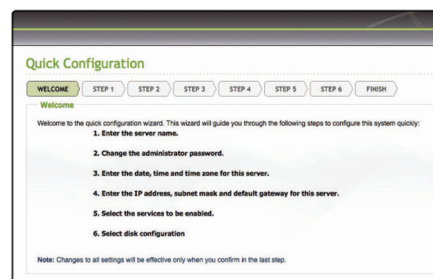
Note: If the server is not found, click "Refresh" to try again.

- e. You must enter the administrator name and password to perform quick setup.



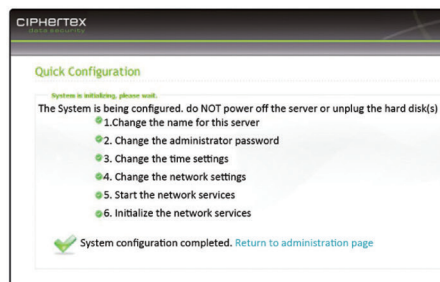
Note: The default administrator name and password is: **admin**

- f. The quick configuration page is shown. Click "Next" and follow the instructions to finish the configuration.



Note: Please make sure that you have installed the hard drive(s) correctly on the CX-R12K-NAS.

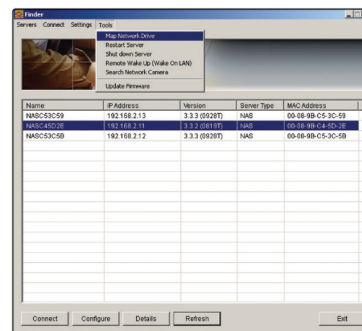
- g. Congratulations! You have finished the quick configuration. Click "Return to the system administration page" to the login page of the CX-R12K-NAS.



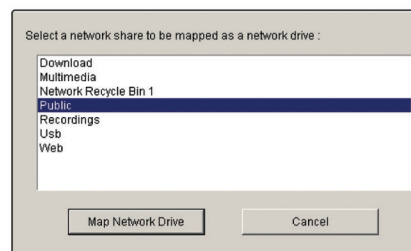
NOTES

MAP NETWORK DRIVE

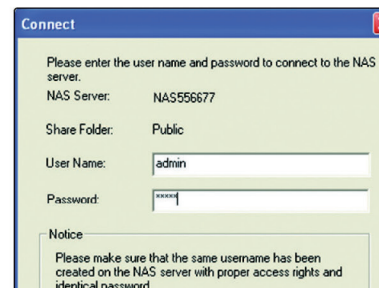
a. From the “Tools” menu, select “Map Network Drive”.



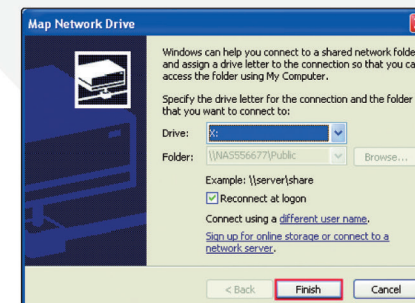
b. The CX-R12K-NAS provides several network shares. Select the network share to map as the network drive and click “Map Network Drive.”



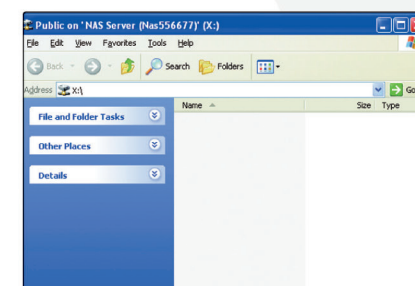
c. Enter default user name and password.



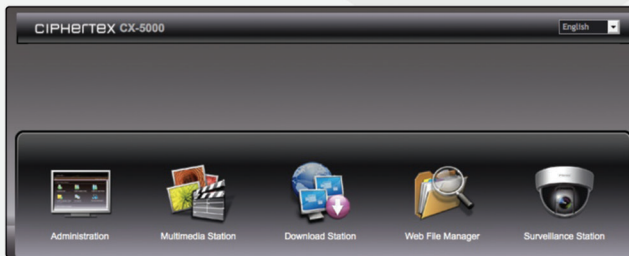
d. Select the drive letter for the connection and click “Finish”.



e. Upon successful connection, you can start to use the network share as a local drive in Windows Explorer.



SYSTEM ADMINISTRATION



a. For system administration, click "Administration".

b. You must enter the administrator name and password to login the system page.



SYSTEM SHUTDOWN

To power off the system, press the power button for 1.5 seconds until the system beeps once. The system will start to shut down and turn off all the LEDs. Do not unplug the power cable directly to turn off the system.

Note: Abnormal shutdown will lead to longer startup time for checking disk data in the next bootup. The checking process may take up to several minutes depending on the hard disk capacity.



HARDWARE SPECIFICATIONS

SYSTEM	CX-R12K-NAS
CPU	Quad Core Intel Xeon E3-1225 3.1GHz
Memory	4 GB DDR3 ECC RAM
Flash	512MB (USB DOM)
Hard Drive	12 x 3.5-inch SATA 6Gb/s, SATA 3Gb/s hard drive or 2.5-inch SATA, SSD hard drive
LAN Port	4 x Gigabit RJ-45 Ethernet port (Optional dual-port 10 Gb network card is supported)
LED Indicators	Status, 10 GbE, LAN, eSATA, hard drives
CPU replacable	No
Memory replacable	No
Number of LONG-DIMM slot	2
Number of hard drive slots	12
Number of expansion slots	1

POWER BUTTON & RESET BUTTON BEHAVIOR

Power button: Press to turn on or turn off.

SYSTEM	POWER BUTTON (Turn on)	POWER BUTTON (Hardware turn off)	POWER BUTTON (Force turn off)
CX-R12K-NAS	Press once	1.5 sec	5 sec

ADVANCED SYSTEM RESET (10 SEC)

Press the reset button for 10 seconds; you will hear two beeps at the third and the tenth seconds. The NAS will reset all the system settings to default as it does by web-based system reset in "Administration" > "Restore to Factory Default" except all the data are reserved. The settings such as the users, user groups, and the network share folders previously created will be cleared. To retrieve the old data after the advanced system reset, create the same network share folders on the NAS and the data will be accessible again.

DISCLAIMER:

We and our affiliated parties have no liability whatsoever for your use of any information or service. Furthermore, we and our affiliated parties shall not be liable for any special, indirect, punitive, consequential, incidental damages, or damages for lost profits, loss of revenue, loss of data, or loss of use, arising out of or related to this manual or the information contained in it, whether such damages arise in contract, negligence, tort, under statute, in equity at law, or otherwise, even if Ciphertex has been advised of the possibility of such damages.

*Design and specifications subject to change without notice.