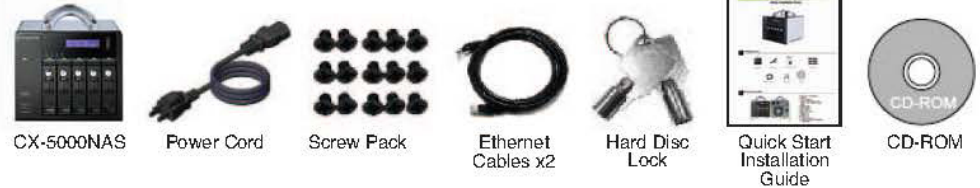




CX-5000NAS Portable NAS Server Quick Installation Guide



1 Package Contents



CX-5000NAS

Power Cord

Screw Pack

Ethernet Cables x2

Hard Disc Lock

Quick Start Installation Guide

CD-ROM

2 Hardware Illustration



1. One Touch Copy Button
2. USB 2.0
3. LED Indicators:
Status, LAN, USB, eSATA,
HDD1, HDD2, HDD3, HDD4, HDD5
4. Power Button
5. Select Button
6. Enter Button
7. Power Connector
8. Giga LAN x 2
9. USB 2.0 x 4
10. eSATA x 2
11. VGA (Reserved)
12. Password & Network Settings Reset Button



Should you have any questions about the product, please feel free to contact us.

Ciphertex Technical Support
9301 Jordan Ave. #106, Chatsworth CA, 91311 USA
1-877-977-8878
On-line support: <http://www.ciphertex.com>

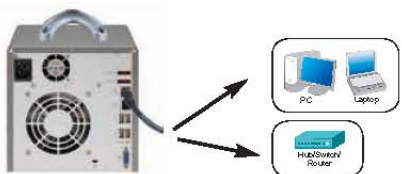
3 Install the Hardware



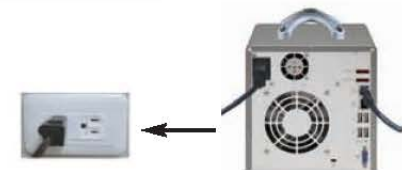
1. Install a hard disk on each tray. Make sure the disk holes match the holes at the base of the disk tray and lock the disk with four screws.



2. Insert the disk trays to the CX-5000 NAS and push the disk trays to the end. Insert the drive trays numbered from left to right.



3. Connect the network cable.

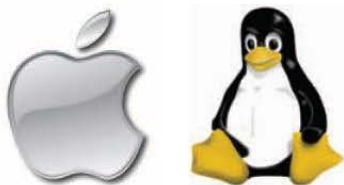


4. Connect the power cord and plug in the power cord to the socket.



5. Turn on the server. It will beep once. Please wait for 2 1/2 minutes until the server beeps a second time. The server has now started up.

4 System Configuration:



Mac or Linux Users

- a. Connect the CX-5000NAS to the PC directly. Turn on the CX-5000NAS
- b. Open a web browser and enter the IP address of the CX-5000NAS: `http://169.254.100.100:8080/` (Make sure the IP address of your PC is configured to the same subnet, e.g. 69.254.100.1).
- c. Follow the instructions to finish the configuration of the CX-5000NAS.

Notes

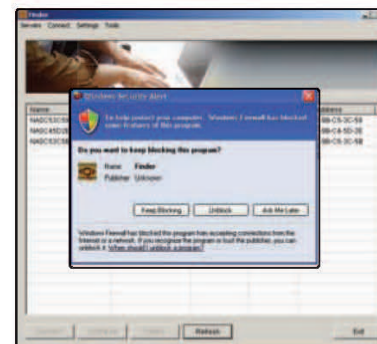
Windows Users



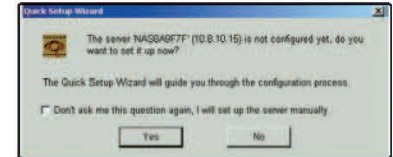
a. Execute the product CD, a model selection menu is shown.



b. Click "Install NAS Finder Software"



c. Follow the instructions to install Ciphertex Locator. Ciphertex Locator will run automatically. If you are using Windows XP SP2, the above screen will be shown. Click "Unblock".

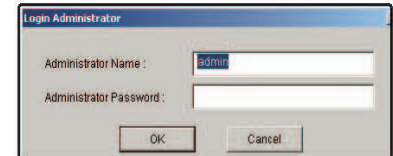


d. Ciphertex Locator detects the CX-5000NAS on the network and prompts you to perform quick setup. Click "Yes" to continue.



Note:

If the server is not found, click "Refresh" to try again.



e. You must enter the administrator name and password to perform quick setup.



Note:

The default administrator name and password are: **admin**

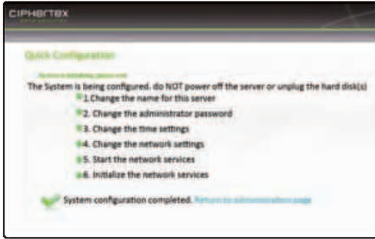


f. The quick configuration page is shown. Click "Next" and follow the instructions to finish the configuration.



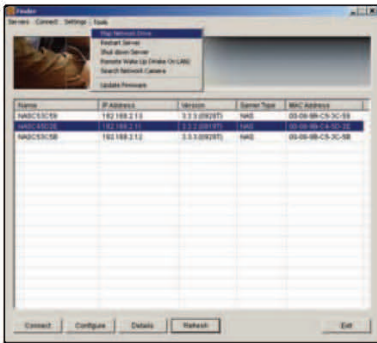
Note:

Please make sure that you have installed the hard drive(s) correctly on the CX-5000NAS.

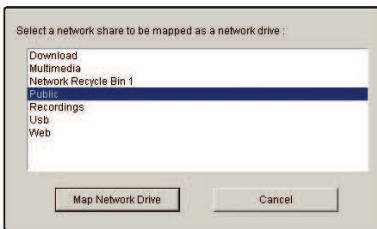


g. Congratulations!
You have finished the quick configuration. Click “Return to the system administration page” to the login page of the CX-5000NAS.

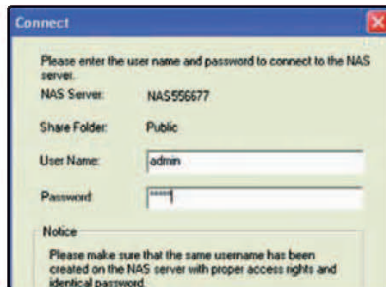
5 Map Network Drive



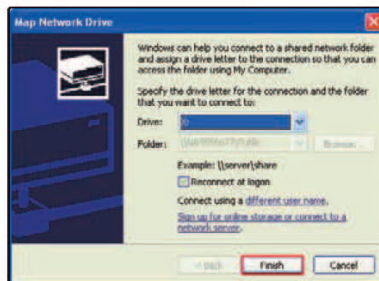
a. From the “Tools” menu, select “Map Network Drive”



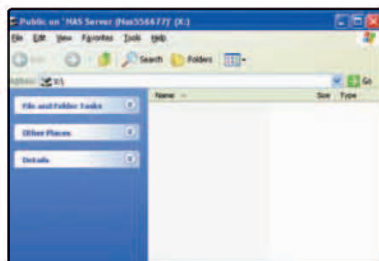
b. The CX-5000 NAS provides several default network shares. Select the network share to map as network drive and click “Map Network Drive”.



c. Enter the default user name and password.

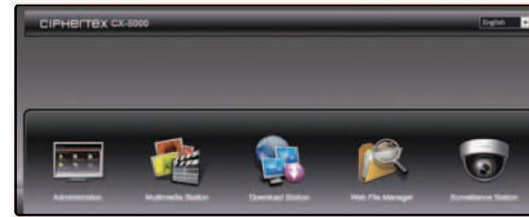


d. Select the drive letter for the connection and click “Finish”.

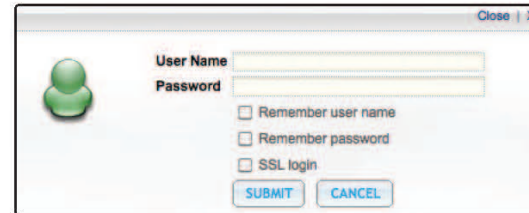


e. Upon successful connection, you can start to use the network share as a local drive in Windows Explorer.

6 System Administration



a. For system administration, click “Administration”.



b. You must enter the administrator name and password to login the system administration page.



7 System Shutdown



To power off the system, press the power button for 1.5 seconds until the system beeps once. The system will start to shut down and turn off all the LEDs. Do not unplug the power cable directly to turn off the system.



Note:
Abnormal shutdown will lead to longer startup time for checking disk data in the next bootup. The checking process may take up to several minutes depending on the hard disk capacity.