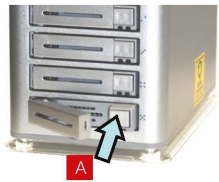


PART III: HARD DRIVES REPLACEMENT

The CX-Ranger EX is delivered with a minimum of 5 hard drives already installed. If you wish to replace the drives, this quick guide provides hardware and software installation instruction.



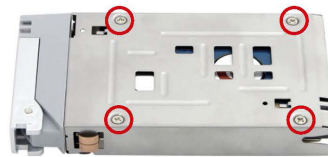
- 1 RELEASE DISK TRAY**
Press on the tray latch (A) to release the disk tray.



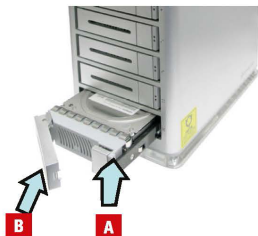
- 2 PULL TRAY OUT**
Pull out the lever (B) to remove the disk tray.



- 3 INSERT HARD DISK DRIVE**
Place the HDD with the connector towards the rear of the tray and make sure the 4 holes in the tray align with the holes in the drive.



- 4 FASTEN DISK DRIVE**
Install the mounting screws on the bottom part.



- 5 SLIDE TRAY IN:** Slide the tray into an empty slot by pushing on the tray latch (A) until the lever (B) begins to close, then push lever to complete closing.



- 6 ALL DISK DRIVES IN**
Repeat step 2 to step 5 to install HDDs you'd like to deploy.

CX-RANGER-E

Encrypted Portable RAID Storage System



Ciphertex, 9301 Jordan Ave. #106, Chatsworth, CA. 91311 USA
Telephone 818.773.8989, Fax 818.885.7770, [http:// www.ciphertex.com](http://www.ciphertex.com)



Designed & Assembled in the USA.

CONTACT US: For product detail, inquiry or technical support, please refer the manual in the package box, visit us online at www.ciphertex.com, or email us at support@ciphertex.com.

TRADEMARKS: All products and trade names used in this document are trademarks or registered trademarks of their respective holders. ©2011 Ciphertex • All Rights Reserved

QUICK START GUIDE

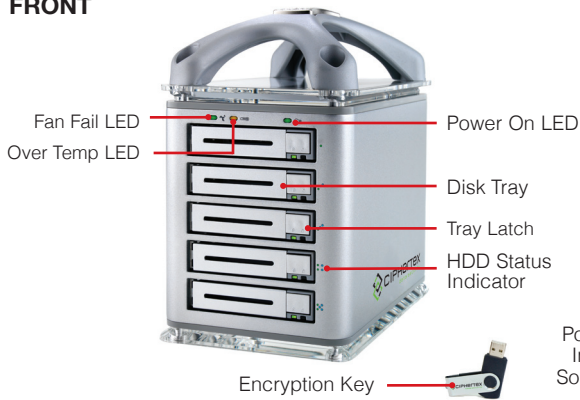


CX-RANGER-E

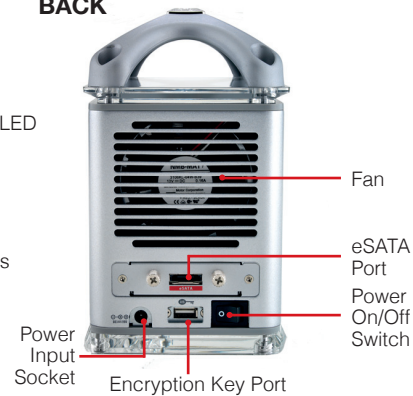
WHAT'S INCLUDED

PART II: SOFTWARE INSTALLATION (BASIC MODE)

FRONT



BACK



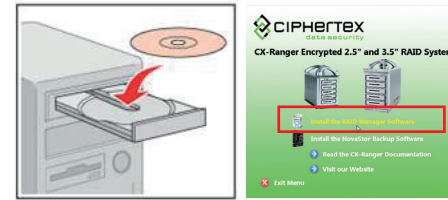
IN THE BOX

- RAID system
- One eSATA to eSATA cable *
- AC Power Cable
- AC Power Adapter
- User's Guide / Product CD
- Quick Start Guide
- Four gripping rubber feet

*OPTIONAL CONNECTIONS



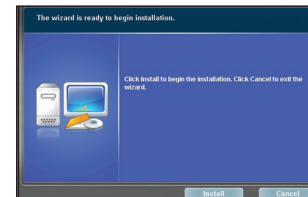
USB 3.0 Dual Firewire 800



1

STARTING SETUP:

1. Insert the CD that comes with the unit into the CD-ROM drive of your Windows host system.
2. To install the Windows AP, Click on "Install the RAID Manager Software as shown."



2

AP INSTALLATION:

Click the install button on setup wizard to start AP Installation.

RAID & Disk Information



3

MANAGEMENT CONSOLE:

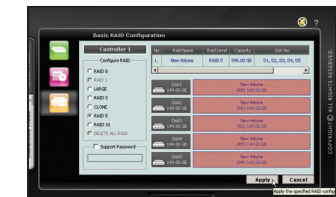
Upon completion of AP installation, Management Console screen will appear.



4

BASIC RAID CONFIGURATION:

Press to start RAID Configuration.



5

APPLY RAID SETTING:

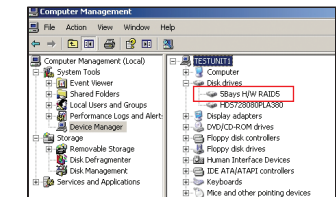
After selecting the RAID levels, press the "apply" button to finish RAID Setting.



6

CONFIGURATION DONE:

Configuration is complete when the disk area becomes orange.



7

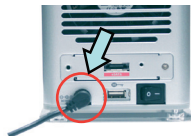
CHECK THE NEW DISK:

Check the new disk in "Device Manager" and then format it in "Disk Management" to initialize the disk.

8 READY TO USE

When the disk format is Completed, the new disk you created with RAID protection is ready for use

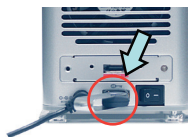
PART I: QUICK CONNECT



1

CONNECT POWER CORD

Connect DC power jack to the power input socket and plug in the power supply to AC power source.



2

PLUG IN hardware encryption key.

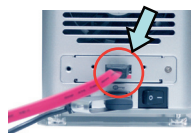
If you do not intend to use encryption, skip this step.



3

TURN ON POWER

Turn on the power switch.



4

CONNECT the cable to your PC/HOST.

After a few seconds, your drive will mount on your computer. With the RAID connected and powered on, turn on the PC/HOST.

You are now ready for software installation.

Notes

- 1) This guide is based on Microsoft Windows platform, please refer to the manual for installation of RAID management software on other platforms.
- 2) For advanced mode configuration, please refer to the manual.